



## 5-AXIS CNC MACHINING CENTERS



**STORMA SCULPTOR 3D-CNC5 / PERFORMANCE 3D-CNC5**

# PRODUCT LINE

Explore the incredible world of ultra-precise 3D machining of various materials with Usel Makina! Our state-of-the-art CNC machining centers with a bridge-type design can turn your most ambitious ideas into reality!



**Storma Performance 3D-CNC5**



**Storma Sculptor 3D-CNC5**



SOFT METALL



ALUMINIUM



WOOD



COMPOSITE



OTHER



MARBLE



GRANITE



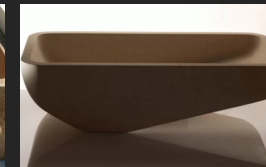
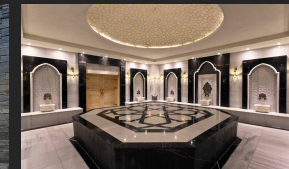
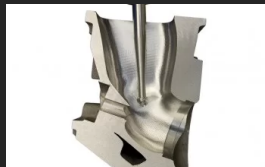
CERAMIC



ARTIFICIAL  
STONE



QUARTZ



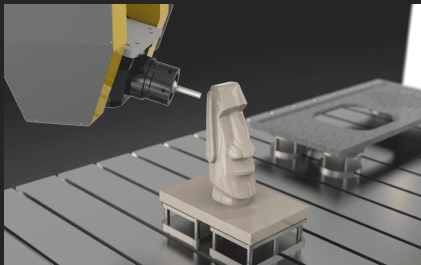


# STORMA PERFORMANCE 3D-CNC5

## 5-AXIS CNC METALL MACHINING CENTRE

This state-of-the-art, high-tech bridge machine combines metalworking, cutting and 3D block machining with the highest precision (CNC precision machining <0.01 mm).

A wide range of options, including automatic tool magazine and turning, allow you to configure the system for a wide range of applications. The high-precision, highest-quality, vibration-free 3D machining capabilities will amaze you!



## PROCESSES



ORTHODONGAL CUTS



90 CUTS



BLOCK NESTING



PROFILING



HOLE MAKING



CURVE CUTS



CIRCULAR CUTS



ELLIPTIC CUTS



POLISHING



CALIBRATING



MILLING



DRILLING



SHAPING



CONTOURING



POCKETING



ENGRAVING



GROOVING



Rugged steel stands. Vibration-free reinforced construction.



The highest level of speed, quality, and accuracy with precision down to 0.01 mm.



The machine meets high safety standards



5-axis 3D machining is ideal for producing complex profiles

# STORMA SCULPTOR 3D-CNC5

## 5-AXIS CNC STONE MACHINING CENTRE

This cutting-edge, high-tech machine blends the power of a heavy-duty saw with the unparalleled precision of 3D machining to process blocks of marble and granite.

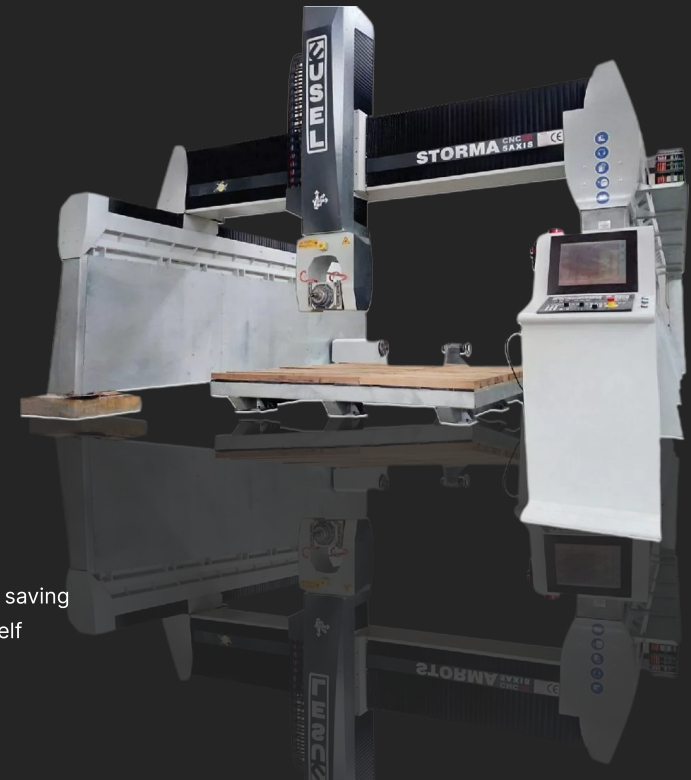
A wide variety of options, including an automatic tool magazine and turning, allow you to configure the system for a wide range of applications.

The high-precision, vibration-free 3D machining capabilities will amaze you!



### Torque-Controlled Adaptive Speed Control

EcoFriendly mode is Usel's patented technology that optimizes the cutting process, saving energy costs and production costs. CNC Saw Machine can decide cutting speed itself according to thickness and density of the stone



## PROCESSES



ORTHODONGAL CUTS



90 CUTS



BLOCK NESTING



PROFILING



HOLE MAKING



CURVE CUTS



CIRCULAR CUTS



ELLIPTIC CUTS



CALIBRATING



MILLING



DRILLING



SHAPING



CONTOURING



POCKETING



ENGRAVING



GROOVING



LINEER CUTS



INCLINED CUTS



45 CUTS



OBLIQUE CUTS



INCREMENTAL CUTS



SLICING



POLISHING



SCULPTING



EDGE PROFILING



CROSS CUTS

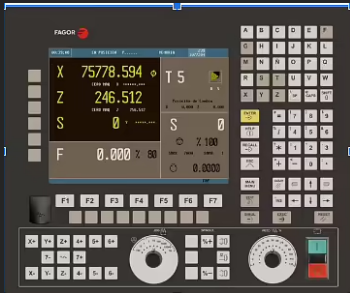


# CONTROL AND SOFTWARE



## Multi functional Mobile Operator Panel 15"

- Colored digital touch panel display to control and positioning of the X,Y,Z,C,A axes Automatic programming
- Multi functional ( 15 operator friendly control ) axis joystick / feed-rate / rpm adjusting
- Blade current (Ampere) can be seen on mobile operator panel



## FAGOR 8055 CNC UNIT + Built-in software interface

5 axis Digital communication control unit and servomotor / drivers

OPTION



## FAGOR 8065 5 axis 17" CNC Unit PC base

+DDX EasyStone NC Interface Software

OPTION



Software DDX EasyStone Premium

OPTION



Fotocamera (Canon) with DDXPhoto Software

OPTION



Laser Scanning System Artec

# MACHINE BODY

## Construction

Bridge type machine. Heavy and reinforced, non vibrational construction. Rigid (body) steel stands.

Complete Heat treatment and fully bohrwerked chasis:

- Heat treatment has been applied to all steel parts after welding to prevent residual stresses and processed in Bohrwerk.
- On the machined surface, two sides of linear rails (guides) are mounted

To provide high rust resistance, 2 lines zinc based undercoat and 2 lines acrylic painting.



Fixed Table Standart 3600x2000 mm

## SPINDLE GROUP



Head rotation 0-360° ( axis C )

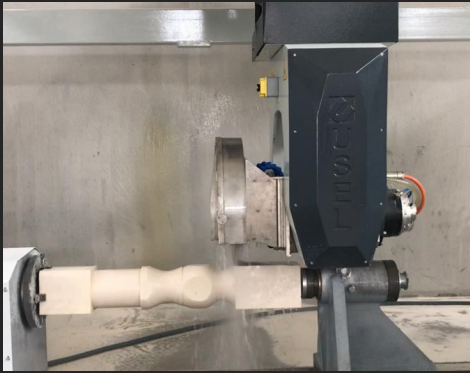
Cutting Head can rotate 360° clockwise uninterrupted can make circular and diagonal cutting with interpolation of X,Y,C axes together. C axis is thrusted with (<1') Reduction gear servomotor (Interpolation with Z axis also)

Inclination of head 0-180° ( axis A )

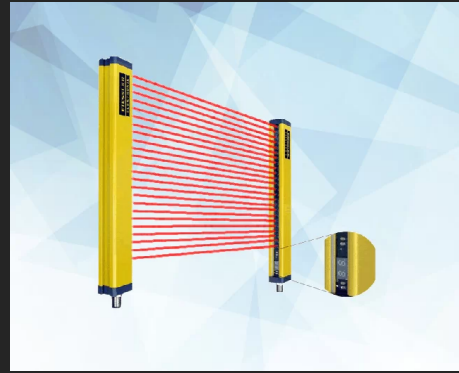
CNC controlled 5.axis is thrusted with (<1') Reduction gear – servomotor Milling head rotate 0-180 with CNC controlled and can make and can make all milling profile with interpolating of X,Y,C,Z,A axes.



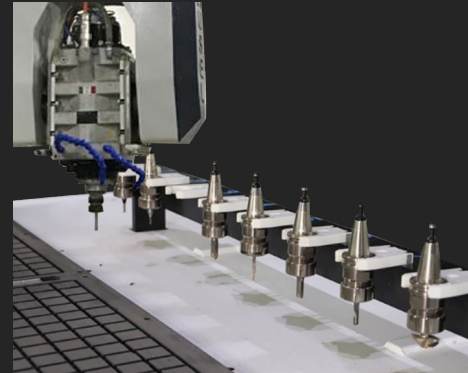
# OPTIONS



TURNING - LATHE



Light Barrier



AUTOMATIC TOOL  
CHANGER and Spindle  
(20 tools)



Complete Hot Galvanised  
Coating



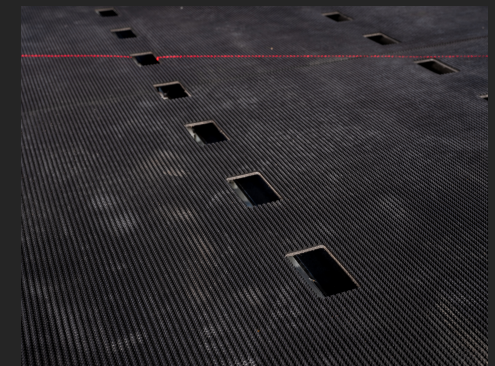
Automatic lubrication



Milling tools



Wireless Handwheel  
(Remote Control )



Supergrip Coating



# TECHNICAL SPECIFICATIONS

|                                  | Storma Performance 3D-CNC5 | Storma Sculptor 3D-CNC5 |
|----------------------------------|----------------------------|-------------------------|
| Max. number of interpolated axes | 5+1*                       | 5+1*                    |
| Cut Head movement (X), mm        | 3600-4000                  | 3600-4000               |
| Bridge Cross Travel (Y), mm      | 2000-12000                 | 2000-12000              |
| Vertical Travel (Z), mm          | 800 - 1500                 | 800 - 1500              |
| Head rotation (C axis)           | 0-360°                     | 0-360°                  |
| Head tilting (A axis)            | 0-180°                     | 0-180°                  |
| Travel Speed (X,Y) m/min         | 0-32,5                     | 0-30                    |
| Max. Blade Diameter, mm          | —                          | 800                     |
| Max. cutting depth, mm           | —                          | 300                     |
| Milling height, mm               | 700                        | 700                     |
| Spindle power                    | 25                         | 25                      |
| Spindle speed                    | 2000-12000                 | 0-8000                  |
| Operating voltage                | 380 / 50                   | 380 / 50                |
| Machine Dimensions (LxWxH), mm   | 6920 × 4940 × 4740         | 6920 × 4940 × 4740      |
| Machine weight, kg               | 15 000                     | 15 000                  |

\*  *Lathe (option)*

BRIDGE SAWS

5-AXIS CNC MACHINING CENTERS



Expert



Professional



Versatile



Performance



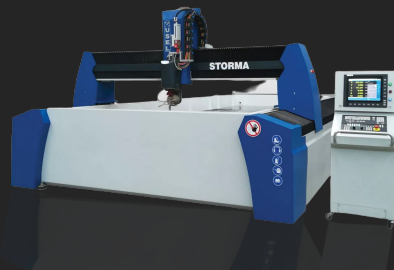
Sculptor

WATERJET CUTTING MACHINES

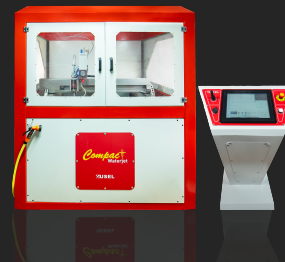
CNC ROUTER MACHINES



Precise



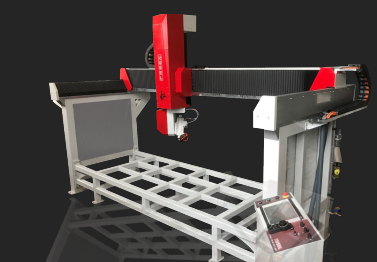
Creator



Compact



Engraver



Technic



## WHY US?



25 YEARS OF SUCCESS IN THE MARKET



WE HAVE BEEN CHOSEN BY 260 COMPANIES  
FROM 25+ COUNTRIES



HIGHEST MANUFACTURING STANDARDS



UNIQUE PRECISION PROCESSING TECHNOLOGY



EUROPEAN QUALITY AT A REASONABLE PRICE



<https://uselmakina.ru/>



+90 216 526 45 75



[usel@usel.com.tr](mailto:usel@usel.com.tr)



İMES Sanayi Sitesi A Blok 104.  
Sok. No 5 Y.Dudullu 34776  
Ümraniye / İstanbul

